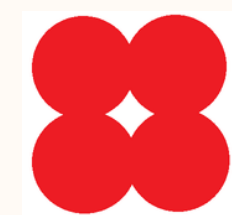


BEAUTY WITH A MASK

LESS TRANSFER MAKEUP, LONG
WEARING, AND DRAMATIC EYE
LOOK.



PT DWIPAR LOKA AYU

LESS TRANSFER and LONGWEAR FOUNDATION

LESS TRANSFER FOR MASK,
LONG WEAR, DEMI MATTE,
UV PROTECTION

INGREDIENTS :

- >> STABILIZE SUSPENSIONS (MAGNESIUM ALUMINIUM SILICATE)
 - >> THICKENER (XANTHAN GUM)
 - >> INORGANIC PIGMENTS ((YELLOW, RED, BLACK, BROWN)
 - >> OXYCHLORIDE POWDER (PEARL GLO)
- ACTIVE INGREDIENTS (ALOE VERA OIL, SODIUM HYALURONATE)



PT DWIPAR LOKA AYU

HYBRID FOUNDATION

COMPLEXION
WITH ACTIVE INGREDIENTS,
LIGHTWEIGHT
WITH UV PROTECTION



INGREDIENTS:

- >> **STABILIZE SUSPENSIONS (MAGNESIUM ALUMINIUM SILICATE)**
 - >> **CATIONIC RHEOLOGY MODIFIER**
- >> **INORGANIC PIGMENTS ((YELLOW, RED, BLACK, BROWN)**
 - >> **OXYCHLORIDE POWDER (PEARL GLO)**
- >> **ACTIVE INGREDIENTS (PHYTOCOLLAGEN, BETA GLUCAN, SODIUM HYALURONATE)**



PT DWIPAR LOKA AYU

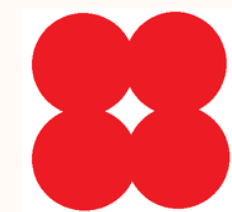
CREAMY GLITERY EYESHADOW

EASY TO APPLY, LONG LASTING FOR
BLINDING EYE LOOK



INGREDIENTS:

- >> **INORGANIC PIGMENTS (BROWN IRON OXIDE, FDnC BLUE 1 AL LAKE, ULTRAMARINE VIOLET)**
- >> **ORGANICS PIGMENTS (DnC RED 6, DnC RED 7, FDnC YELLOW 5)**
- >> **PEARL PIGMENT**



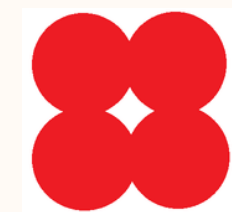
PT DWIPAR LOKA AYU

UNDER EYE ANTI WRINKLE CONCEALER

UNDER EYE CONCEALER WITH ANTI
AGING FORMULA

INGREDIENTS:

- >> INORGANIC PIGMENTS (YELLOW, RED, BLACK, BROWN IRON OXIDE)
- >> OXYCHLORIDE POWDER (PEARL GLO) FOR SOFT TEXTURE , EXCELLENT COVERING POWDER AND ANTI OXYDIZE FORMULATION
- >> ACTIVE INGREDIENTS (ALOE VERA OIL)



PT DWIPAR LOKA AYU

TINTED LIP BALM

COMFORTABLE LIP BALM WITH TINTED
COLOUR



INGREDIENTS:

>> ORGANICS PIGMENTS (FDnC YELLOW 5, DnC RED 27)

>> ACTIVE (ALOE VERA OIL)



PT DWIPAR LOKA AYU

DEMI MATTE LIP CREAM

COMFORTABLE LIP CREAM WITH HIGH
PIGMENTATION

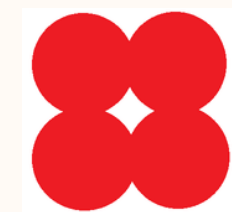


INGREDIENTS:

>> INORGANIC PIGMENTS (RED, BLACK, BROWN IRON OXIDE,)

>> ORGANICS PIGMENTS (DnC RED 6, DnC RED 7, DnC RED 27, FDnC YELLOW 5)

>> ACTIVE (ALOE VERA OIL, ASTAXANTHIN OIL)



PT DWIPAR LOKA AYU

CUSHION BLUSH ON

LONG WEAR AND EASY TO BLEND WITH
PIGMENTED BLUSH CREAM

INGREDIENTS:

>> INORGANIC PIGMENTS (BROWN IRON OXIDE)

>> ORGANICS PIGMENTS (DnC RED 21, DnC RED 27, FD n C YELLOW 6)

>> PEARL PIGMENT



LIQUID HIGHLIGHTER

FOR GLOWING AND WET LOOK
COMPLEXION

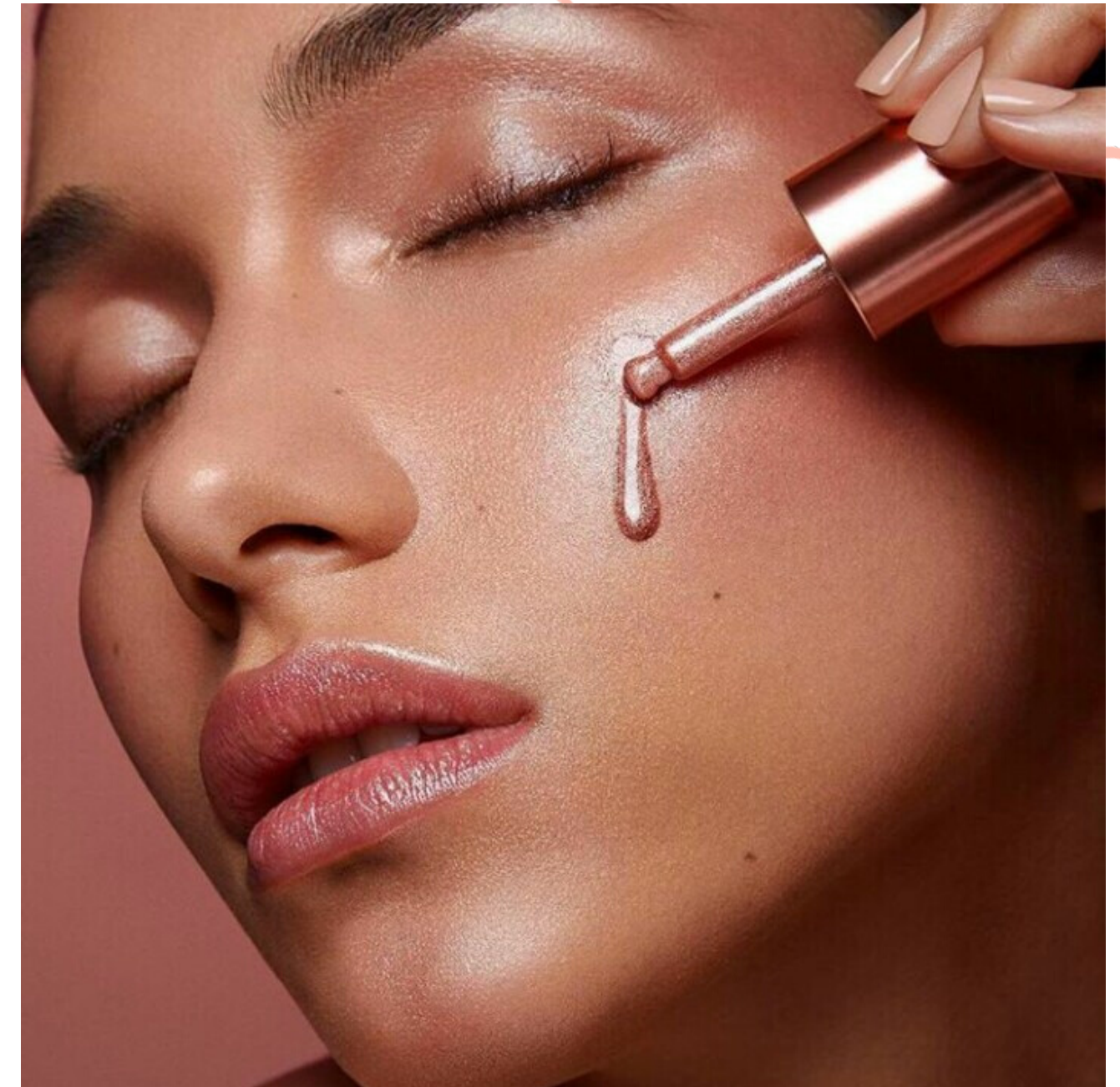
INGREDIENTS:

>> INORGANIC PIGMENTS (YELLOW, RED, BLACK, BROWN IRON OXIDE)

>> PEARL PIGMENT

>> SYNTHETIC FLUORPHLOGOPITE

>> PRESERVATIVE and MOISTURIZER (CAPYLYL GLYCOL)



DRAMATIC MASCARA LOOK

LIGHTENING
/ VOLUMIZING AND INTENSE BLACK



INGREDIENTS:

>> ACTIVE INGREDIENTS (ALOE VERA OIL)

>> BULK MASCARA (BLACK AND BLUE)

>> STABILIZE SUSPENSIONS (MAGNESIUM ALUMINIUM SILICATE)

>> THICKENER (XANTHAN GUM)